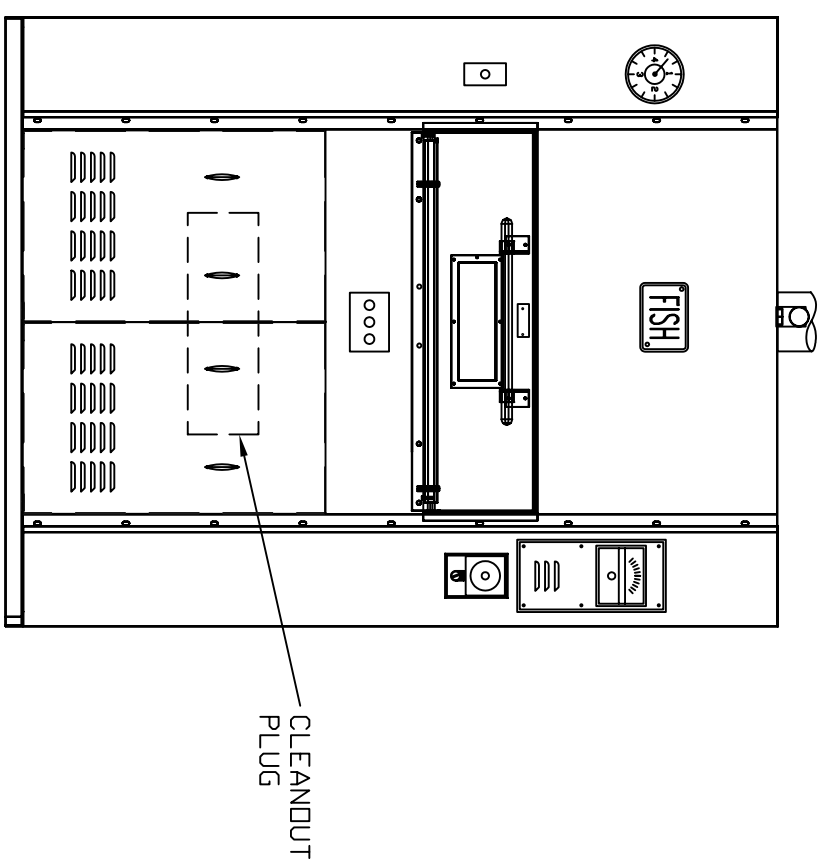
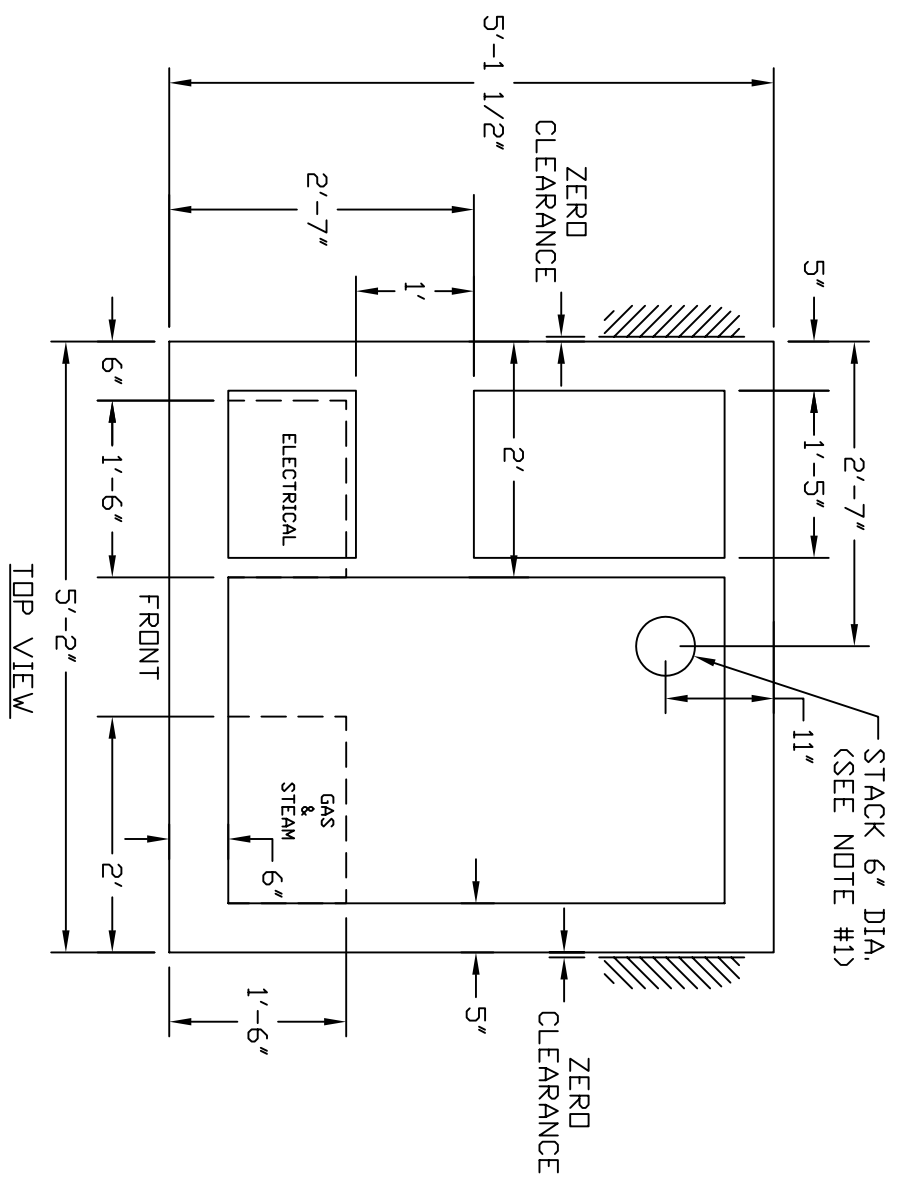


REV	DESCRIPTION	BY	DATE	MODEL: P-38	UNLESS OTHERWISE SPECIFIED TOLERANCES ON DIMENSIONS IN INCHES	THIS DRAWING IS THE PROPERTY OF CAMPBELL INTERNATIONAL, AND MAY NOT BE REPRODUCED FOR ANY PURPOSE WITHOUT WRITTEN CONSENT OF THE COMPANY.	<b>FISH OVEN &amp; EQUIPMENT, INC.</b> WAUCONDA, IL 60084	DWG. #	REV.
				STYLE: P-38B	DECIMALS .XXX ± .030			P-38B-FP	
				ASSEMBLY	FRACTIONAL .XX ± .060		TITLE: P-38 GAS OVEN	DATE	PAGE
				NO. REG'D	± 1/16			01/29/07	
				MAT'L:					



**SERVICE CONNECTIONS:**

- 1 - ELECTRICITY AND GAS LINES MAY BE BROUGHT THROUGH THE FLOOR OUTSIDE SHADED AREAS, PREFERABLY IN AREAS SHOWN.
- 2 - ELECTRICITY AND GAS LINES ABOVE FLOOR LEVEL MAY BE BROUGHT THROUGH A SIDE OR REAR WALL NEAR THE FLOOR BY CUTTING THE REQUIRED HOLES.
- 3 - STEAM MAY BE BROUGHT IN HERE FROM BELOW OR ABOVE (IF REQUIRED).

**SERVICE LINES:**

- ONE - 1/2" ELECTRICAL CONDUIT - 110V/1PH/60HZ/15AMP
- ONE - 1/2" GAS LINE - 90,000 BTU
- ONE - ADDITIONAL ELECTRICAL CONDUIT WHEN 220V IS USED FOR ELECTRIC BURNER AND DRIVE.
- ONE - 3/4" PIPE, STEAM LINE (IF REQUIRED)

**NOTES:**

#1 - A 6" EXHAUST FLUE MUST BE PROPERLY VENTED TO THE OUTSIDE OF THE BUILDING AND PROVIDE A 0.03-0.05 INCH WATER COLUMN UP DRAFT. A VERTICAL DRAFT DIVERTER OR EQUIVALENT, MUST BE INSTALLED IN ALL NATURALLY VENTED OVENS.

